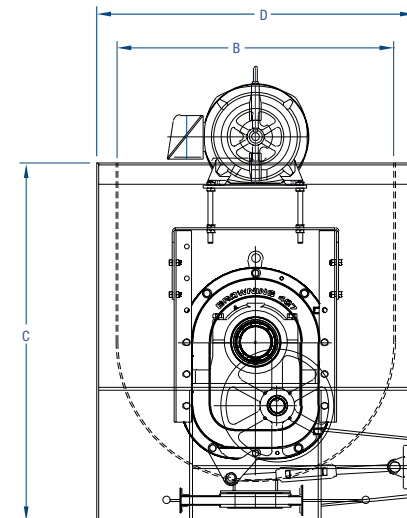
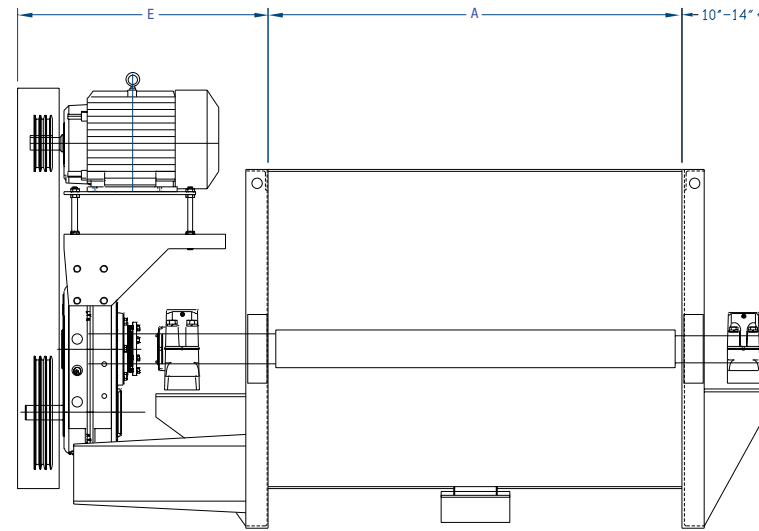


Model	Size	Mixer Capacity		A		B		C		D		E	
		Cubic ft.	Cubic M	in	mm	in	mm	in	mm	in	mm	in	mm
<b>18" MIXERS</b>													
HM1818	18" X 18"	2.6	0.1	18	457	18	457	28	711	22	559	23	584
HM182	18" X 24"	3.5	0.1	24	610	18	457	28	711	22	559	23	584
HM183	18" X 36"	5	0.1	36	914	18	457	28	711	22	559	23	584
<b>24" MIXERS</b>													
HM243	24" X 36"	10	0.3	36	914	24	610	34	864	28	711	23	584
<b>30" MIXERS</b>													
HM304	30" X 48"	20	0.6	48	1219	30	762	40	1016	34	864	23	584
<b>36" MIXERS</b>													
HM364	36" X 48"	28	0.8	48	1219	36	914	46	1168	40	1016	23	584
<b>40" MIXERS</b>													
HM404	40" X 48"	35	1	60	1524	48	1219	50	1270	54	1372	23	584
HM405	40" X 60"	44	1.2	72	1829	48	1219	50	1270	54	1372	23	584
<b>44" MIXERS</b>													
HM445	44" X 60"	53	1.5	60	1524	44	1118	56	1422	50	1270	23	584
<b>48" MIXERS</b>													
HM485	48" X 60"	62	1.8	60	1524	48	1219	60	1524	54	1372	25	635
HM486	48" X 72"	74	2.1	72	1829	48	1219	60	1524	54	1372	25	635
HM488	48" X 96"	100	2.8	96	2438	48	1219	60	1524	54	1372	28	711
HM489	48" X 108"	112	3.2	108	2743	48	1219	60	1524	54	1372	28	711
HM4810	48" X 120"	125	3.5	120	3048	48	1219	60	1524	54	1372	30	762
HM4812	48" X 144"	150	4.2	144	3658	48	1219	60	1524	54	1372	30	762
<b>54" MIXERS</b>													
HM548	54" X 96"	126	3.6	96	2438	54	1372	66	1676	60	1524	30	762
HM5410	54" X 120"	158	4.5	120	3048	54	1372	66	1676	60	1524	30	762
HM5412	54" X 144"	190	5.4	144	3658	54	1372	66	1676	60	1625	30	762
<b>60" MIXERS</b>													
HM6010	60" X 120"	195	5.5	120	3048	60	1524	72	1829	66	1676	34	864
HM6012	60" X 144"	235	6.7	144	3658	60	1524	72	1829	66	1676	34	864
<b>66" MIXERS</b>													
HM6611	66" X 132"	260	7.4	132	3353	66	1676	78	1981	72	1829	34	864
HM6612	66" X 144"	284	8	144	3658	66	1676	78	1981	72	1829	34	864
HM6615	66" X 180"	530	9.9	180	4572	66	1676	78	1981	72	1829	34	864
<b>72" MIXERS</b>													
HM7212	72" X 144"	338	9.6	144	3658	72	1829	86	2184	80	2032	36	914
HM7213	72" X 156"	367	10.4	156	3962	72	1829	86	2184	80	2032	36	914
HM7214	72" X 168"	395	11.2	168	4267	72	1829	86	2184	80	2032	36	914
<b>78" MIXERS</b>													
HM7813	78" X 156"	430	12.2	156	3962	78	1981	92	2337	86	2184	36	914
HM7814	78" X 168"	465	13.2	168	4267	78	1981	92	2337	86	2184	36	914
HM7815	78" X 180"	497	14.1	180	4572	78	1981	92	2337	86	2184	36	914
<b>84" MIXERS</b>													
HM8414	84" X 168"	538	15.2	168	4267	84	2134	98	2489	92	2337	38	965
HM8415	84" X 180"	577	16.3	180	4572	84	2134	98	2489	92	2337	38	965
HM8416	84" X 192"	615	17.4	192	4877	84	2134	98	2489	92	2337	38	965
<b>96" MIXERS</b>													
HM9616	96" X 192"	803	22.7	192	4877	96	2438	110	2794	104	2642	40	1016
HM9617	96" X 204"	854	24.2	204	5182	96	2438	110	2794	104	2642	40	1016
HM9618	96" X 216"	904	25.6	216	5486	96	2438	110	2794	104	2642	40	1016



## Stainless Steel Batch Mixers



Durably constructed in either mild or stainless steel, Scott mixers insure accurate mixing of all types of products from fine powdered materials to coarse ground ingredients. All Scott mixers are custom built to effectively meet each application's requirement.

- Sanitary finishes available up to and including 3A Dairy Standard
- Complete mix times as low as 30 seconds
- Available in 1 to 1,500 cubic foot capacities
- Ribbon, paddle or paddle/ribbon combination design in mild or stainless steel with a variety of dischargers available
- Scott Mixers are constructed with heavy-plate tub bottom and end plates. A variety of drive assembly designs are available, including shaft mount, gear head or direct drive. All drive assemblies are a minimum of AGMA Class II rating



For more information, please contact us:  
605 4th Avenue NW, New Prague MN 56071  
Phone: (800) 394-2591 (952) 758-2591

Fax: (952) 758-4377  
E-mail: Sales@ScottEquipment.com  
Or visit our website at [www.scottequipment.com](http://www.scottequipment.com)

605 4th Avenue Northwest • New Prague, Minnesota 56071 • (800) 394-2591 • [www.scottequipment.com](http://www.scottequipment.com)

# Twin Shaft Batch Mixer



The Scott Twin Shaft Mixer is ideal for mixing various materials in a balanced action to achieve a homogeneous product

- The twin agitator design offers unsurpassed mixing efficiency for a wide variety of products
- Mix times as low as 30 seconds can be achieved with high-speed scale designs
- If height limitations are a concern, the Twin Shaft Mixer is an excellent fit for restricted areas



# Jacketed Mixers

Scott jacketed mixers are essential for applications where heating or cooling the product is desired

- The fluidization created by the mixing action offers the products excellent surface area coverage on the mixer cylinder
- Available in mild or stainless steel, and are manufactured in a complete sanitary design with steam heat, hot water heat, or cold water jackets for cooling applications



# Discharge Gate Options

Scott Equipment offers a variety of discharge gates, which are available in sizes ranging from 2" in diameter to 36" in diameter



Plug Gate



Slide Gate



End Discharge Gate

# Design Options



Ribbon Agitator

- Scott's sanitary design ribbons are constructed of a stainless steel close-wrapped balanced design
- Polished sanitary design helps eliminate cross contamination between mixing runs
- Optional air-purge design through the main shaft provides complete cleanout



Paddle Agitator

- Paddle design allows for easy cleaning of agitator assembly
- Available in polished sanitary design up to 3A Dairy Standard
- Paddle blades are adjustable and replaceable to maintain close tolerance to the mixer bottom in non-sanitary models



Paddle/Ribbon Agitator

- Combines the benefits of the Paddle Agitator Design while simultaneously giving end-to-end mixing action of the Ribbon Mixer

# Standard Seals

## Ultra Sanitary Seal

- USDA 3A Dairy standard seal
- No tools required for disassembly
- All flanges split to remove for washing

## Air Purge Seal

- Air purge packing gland seals are available for special applications
- Air purge seals prevent leakage of fine materials

## Split Packing Gland Seal

- Graphite or nylon packing

## Packing Gland Seal

- 3 or more rings of packing available



High Speed Choppers



Clean In Place (CIP)

