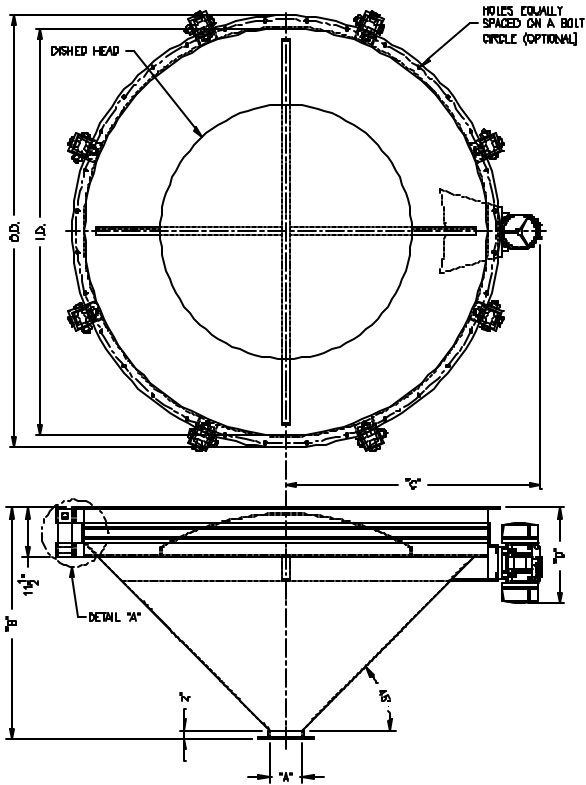


# Bin Activator



Heavy duty low maintenance Bin Discharger. Designed to provide positive, continuous discharge of dry materials.

## Pittsburgh Tank Standard Bin Activator Dimensions



### Standard Features:

- Carbon steel construction.
- Continuous heavy-duty neoprene sleeve.
- Conical internal baffle.
- Solid steel hanger arms.
- Unitized vibrator motor.

### Options:

- Secondary baffle.
- Dual discharge angles.
- Stainless steel / abrasion resistant construction.
- Explosion proof / variable voltages.

Contact sales for other available options.

Dia.	Hole Requirements for Bolted Adapter Ring
2'	(12) $1^{11}/16$ " dia. equally spaced on a 2'-4" B.C.(optional)
3'	(12) $1^{11}/16$ " dia. equally spaced on a 3'-4" B.C.(optional)
4'	(16) $1^{11}/16$ " dia. equally spaced on a 4'-4" B.C.(optional)
5'	(16) $1^{11}/16$ " dia. equally spaced on a 5'-4" B.C.(optional)
6'	(20) $1^{11}/16$ " dia. equally spaced on a 6'-4" B.C.(optional)
8'	(32) $1^{13}/16$ " dia. equally spaced on a 8'-4" B.C. (optional)
10'	(36) $1^{1}/8$ " dia. equally spaced on a 10'-3 $1/4$ " B.C. (optional)

Dia.	O.D.	I.D.	HP	# of Hangers
2'	2'-6"	2'-0"	.5	3
3'	3'-6"	3'-0"	.75	3
4'	4'-6"	4'-0"	.75	4
5'	5'-6"	5'-0"	1.5	4
6'	6'-6"	6'-0"	1.5	5
8'	8'-6"	8'-0"	3.0	8
10'	10'-6"	10'-0"	4.0	12

Dia.	"A"	"B"	"C"	"D"
2'	8"	1'-6 $1/2$ "	1'-10 $9/16$ "	1'-6 $1/8$ "
3'	8"	2'-0 $1/2$ "	2'-5 $9/16$ "	1'-7 $15/16$ "
4'	8"	2'-6 $1/2$ "	2'-11 $3/4$ "	1'-8 $1/4$ "
5'	8"	3'-0 $1/2$ "	3'-6 $13/16$ "	1'-10"
6'	8"	3'-6 $1/2$ "	4'-0 $13/16$ "	1'-10"
8'	8"	4'-6 $1/2$ "	5'-1 $12/16$ "	2'-0 $1/8$ "
10'	8"	6'-1 $7/8$ "	6'-1 $15/16$ "	2'-0 $1/8$ "

Dia.	"A"	"B"	Dia.	"A"	"B"
2'	6"	1'-7 $1/2$ "	6'	8"	3'-6 $1/2$ "
	8"	1'-6 $1/2$ "		10"	3'-5 $1/2$ "
	10"	1'-5 $1/2$ "		12"	3'-4 $1/2$ "
3'	6"	2'-1 $1/2$ "	8'	14"	3'-3 $7/8$ "
	8"	2'-0 $1/2$ "		16"	3'-2 $7/8$ "
	10"	1'-11 $1/2$ "		18"	3'-1 $7/8$ "
	12"	1'-10 $1/2$ "		20"	3'-0 $7/8$ "
	14"	1'-9 $7/8$ "		8"	4'-6 $1/2$ "
4'	6"	2'-7 $1/2$ "	10'	10"	4'-5 $1/2$ "
	8"	2'-6 $1/2$ "		12"	4'-4 $1/2$ "
	10"	2'-5 $1/2$ "		14"	4'-3 $7/8$ "
	12"	2'-4 $1/2$ "		16"	4'-2 $7/8$ "
	14"	2'-3 $7/8$ "		18"	4'-1 $7/8$ "
	16"	2'-2 $7/8$ "		20"	4'-0 $7/8$ "
5'	6"	3'-1 $1/2$ "	10'	10"	5'-5 $1/2$ "
	8"	3'-0 $1/2$ "		12"	5'-4 $1/2$ "
	10"	2'-11 $1/2$ "		14"	5'-3 $7/8$ "
	12"	2'-10 $1/2$ "		16"	5'-2 $7/8$ "
	14"	2'-9 $7/8$ "		18"	5'-1 $7/8$ "
	16"	2'-8 $7/8$ "		20"	5'-0 $7/8$ "
	18"	2'-7 $7/8$ "		24"	4'-11 $7/8$ "

- Dimensions are reference only. Do not use for construction.
- Contact Pittsburgh Tank for optional vibrator horsepower and electrical requirements.
- Additional bin activator sizes not listed available upon request.



### Pittsburgh Tank Corporation

1500 Industrial Drive, Monongahela, PA 15063

Phone: (724) 258-0200 • (800) 634-0243 • Fax: (724) 258-735C

E-Mail: sales@pqtank.com